

# MOBEYE PANIC BUTTON

## Mobeye Panic Button CM2500



**To warn contact persons by SMS text message and call after one push on the button**

Just press the button and your selected contact persons will receive a text message and telephone call.

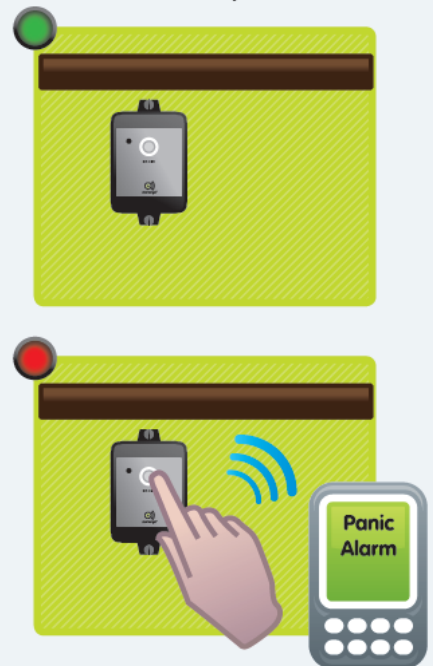
The module is easy to install and ready to use; just insert a SIM card and program the telephone numbers of the contact persons. Alarm signals are sent via the internal GSM module. The unit can be fully battery-operated, or powered by an external source. In a simple way sensors and contacts can be connected to the inputs.



The panic button is battery-operated, has no external wires and has a very long battery life time. The small box can be placed near a person, under a desk, beside a bed, or near a machine.

After pressing the button for a second, the internal GSM module will establish network connection and send alerts to the set telephone numbers within 20 seconds. This time can be shorted by using the mains power.

**Mobeye Panic Button.**  
The easiest way to be alerted!



### Typical Applications



- For people in need of medical care
- For home safety
- As lone workers alarm
- For safety in shops

## Mobeye Internet Portal & SIM service

The Mobeye CM2500 can be deployed "stand-alone", using a regular SIM card. Optional connection to the Mobeye Internet Portal, using a Mobeye SIM card, offers many more features. The portal distinguishes between alarm messages and technical reports. The contacts receive messages per call, SMS and / or email. The "keep-alive" monitor provides additional security by monitoring test reports. If the test message are not sent in time, the (technical) contacts receive a warning message from the portal.



### Mobeye Panic Button Technical data



<b>Inputs</b>	<ul style="list-style-type: none"> <li>• 1 (for additional external emergency button)</li> <li>• 12VDC (optional: mains adapter)</li> </ul>
<b>User interface</b>	<ul style="list-style-type: none"> <li>• Emergency button</li> <li>• 1x status LEDs</li> </ul>
<b>Dimensions</b>	<ul style="list-style-type: none"> <li>• 80 x 60 x 30 mm</li> </ul>
<b>(Alarm) messages</b>	<ul style="list-style-type: none"> <li>• SMS and/or call at pressing the button <i>Confirmation possible by receiver of phone call, after which subsequent calls are stopped</i></li> <li>• SMS at low batteries</li> <li>• SMS test messages ("keep alive")</li> <li>• If external power supply is connected               <ul style="list-style-type: none"> <li>• SMS and/or call at power failure</li> <li>• SMS at power restoration</li> </ul> </li> </ul>
<b>Reports</b>	<ul style="list-style-type: none"> <li>• Status reports, settings report and GSM network strength at request via SMS text messages</li> </ul>
<b>Security</b>	<ul style="list-style-type: none"> <li>• PIN code security for configuration</li> </ul>
<b>Configuration</b>	<ul style="list-style-type: none"> <li>• Via SMS text message:               <ul style="list-style-type: none"> <li>• telephone numbers (max. 5)</li> <li>• user-defined alarm texts</li> <li>• power failure delay times</li> <li>• frequency of test messages</li> </ul> </li> </ul>
<b>Power supply</b>	<ul style="list-style-type: none"> <li>• 2x CR123 lithium (included)</li> <li>or</li> <li>• 12VDC (mains adapter) + 2x CR123</li> </ul>
<b>Battery life time</b>	<ul style="list-style-type: none"> <li>• &gt; 1 year at normal use (battery operated)</li> <li>• &gt; 2 years at normal use (ext. power supply)</li> </ul>
<b>GSM/GPRS</b>	<ul style="list-style-type: none"> <li>• Quad band EGSM 900/1800 - 850/1900 MHz</li> </ul>

## About Mobeye

The company Mobeye is specialized in high quality GSM/GPRS alarm and telemetry technology. Mobeye products are characterised by configuration flexibility, user friendliness and an extremely low power consumption. Mobeye aims to design and market products that contribute to a safer world for its customers.